

T0 Package Test socket, Stamping contact type GU16 series Size 16x27.9mm / 0.63x1.10"

Specifications

Contact resistance : 50mΩ max
Current rating : 1.5A *
Withstanding Voltage : DC500Vrms 1min
Insulation Resistance : 500MΩmin at DC500V
Operating temperature : -40°C~+175°C

T0-252/D-PAK
Burn-in Test
Kelvin Contact (option)
Cost competitive

* Please contact us for the high current type.

T0-252/D-PAK Package Test Socket

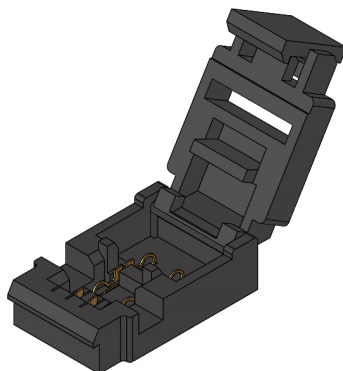
How to order

GU16 - T0252 - K - □□□□

T0-252
D-PAK
Package

Custom Code
P/N will be informed after
fixing specifications.

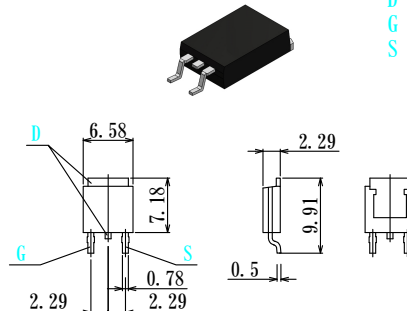
N : No Kelvin Contact
K : With Kelvin Contact



Acceptable device size

T0-252/D-PAK

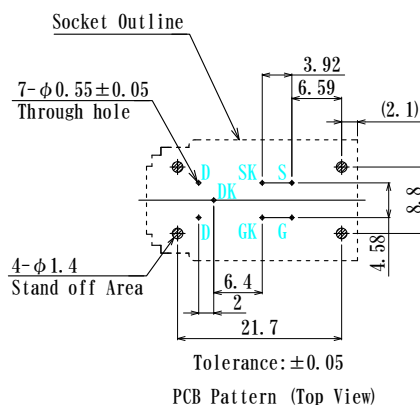
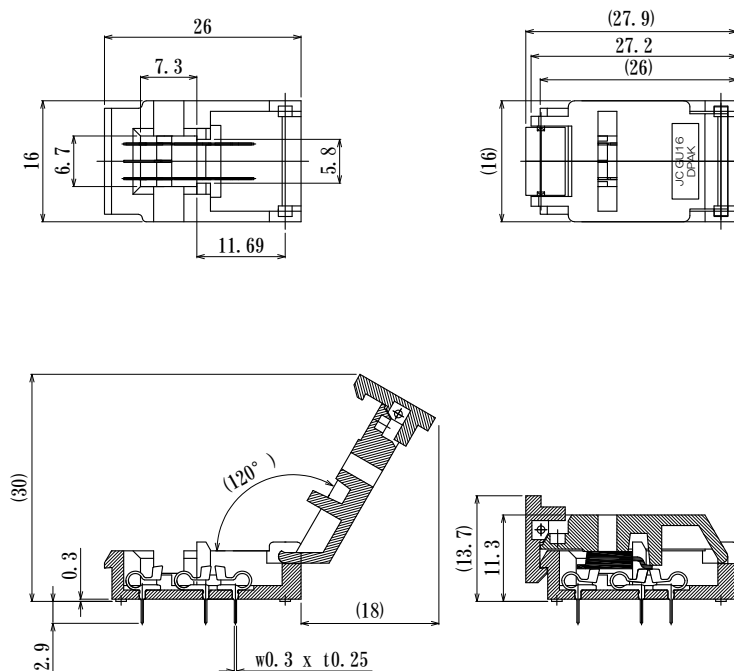
D : Drain
G : Gate
S : Source



Typical Dimension

Generally, T0-252/D-PAK package size is specified. However, the size depends on the semiconductor manufacturers and devices. If you send us your device in advance, we can properly confirm its adoption.

actual size



GK, DK, SK Thru holes are for Kelvin contact. These holes are not necessary if Kelvin Contact is not required.

T0 Package Test socket, Stamping contact type
GU16 series
Size 16x27.9mm / 0.63x1.10"

T0-263/D2-PAK
Burn-in Test
Kelvin Contact (option)
Cost competitive

Specifications
Contact resistance : 50mΩ max
Current rating : 1.5A *
Withstanding Voltage : DC500Vrms 1min
Insulation Resistance : 500MΩmin at DC500V
Operating temperature : -40℃~+175℃

* Please contact us for the high current type.

T0-263/D2-PAK Package Test Socket

How to order

GU16 - T0263 - K - □□□□

T0-263
D2-PAK
Package

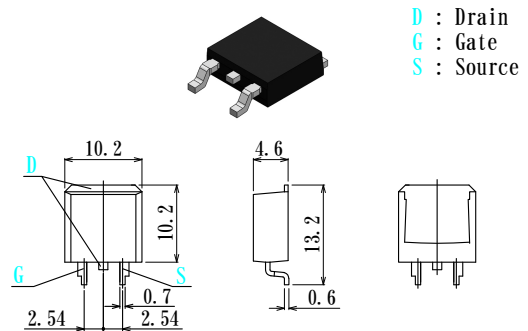
Custom Code
P/N will be informed after
fixing specifications.

N : No Kelvin Contact
K : With Kelvin Contact



Acceptable device size

T0-263/D2-PAK (FD)



Typical Dimension

Generally, T0-252/D-PAK package size is specified. However, the size depends on the semiconductor manufacturers and devices. If you send us your device in advance, we can properly confirm its adoption.

actual size

