

Power Transistor Test Sockets (For TO-220, TO-3P, TO-254, etc)

Features:

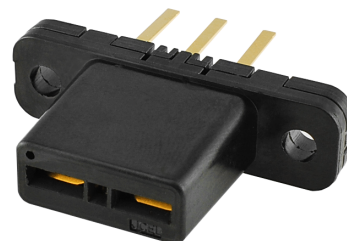
Power Transistor Test Sockets accommodate various packages and the sockets are compatible with using for high current, high withstand voltage and under high-temperature environment.

Suitable for packages including TO-220, TO-3P, TO-66, TO-247, TO-254, TO-262, TO-264.

(Some package might not be usable. Please call us)

PC Board Mounting type

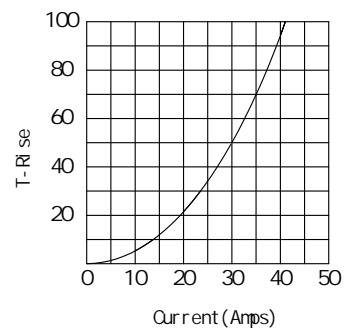
- High current type
- High voltage type
- High temperature type



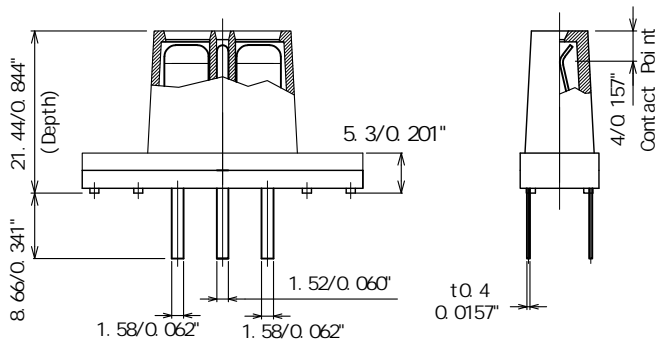
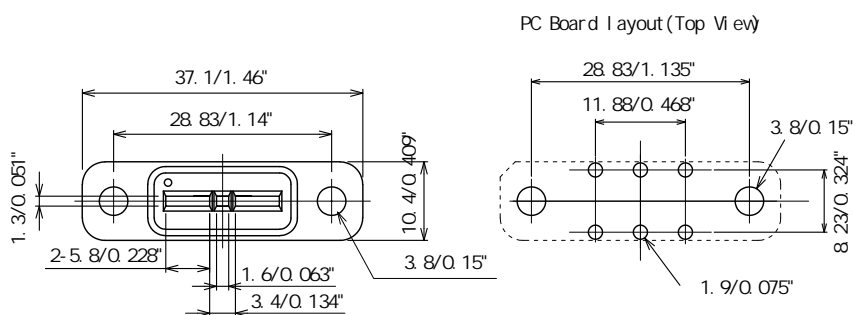
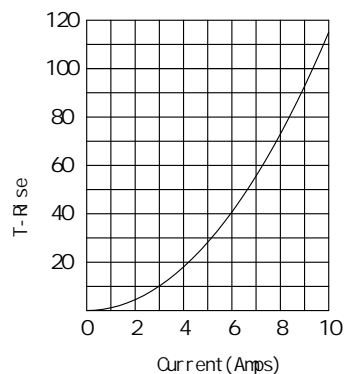
Specifications		High current type	High temperature type		
		High voltage type	High voltage type		
P/N		T3P-L214-ST-BK	T3P-L214-ST-HT	T3P-L214-ST-HT-P	
Materials	Insulator	PPS Black		PEEK (Low Outgassing)	
	Contact	Copper Alloy Au plating over Ni plating	Stainless Steel Au plating over Ni plating		
Mounting Durability		10,000 cycles (note*)			
Contact Resistance		20 m max	50 m max		
Insulation Resistance		500 M min			
Withstanding Voltage		DC2000V 1 minute at 25 (DC5000V Max), AC1500Vrms 1 minute at 25			
Temperature Range		-55 +150	-55 +220		

note* : Using a Standard Test Lead of ours

T3P-L214-ST-BK
T-Rise Current Chart (Reference)



T3P-L214-ST-HT
T3P-L214-ST-HT-P
T-Rise Current Chart (Reference)



How to use

