

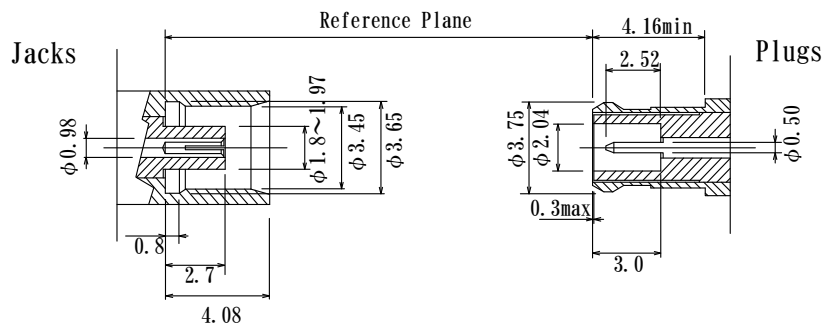
MCX Connectors

MCX connector resembles SMB connector in that MCX has snap-on mating figure.
And MCX connector saves 30% space comparing to SMB connector.

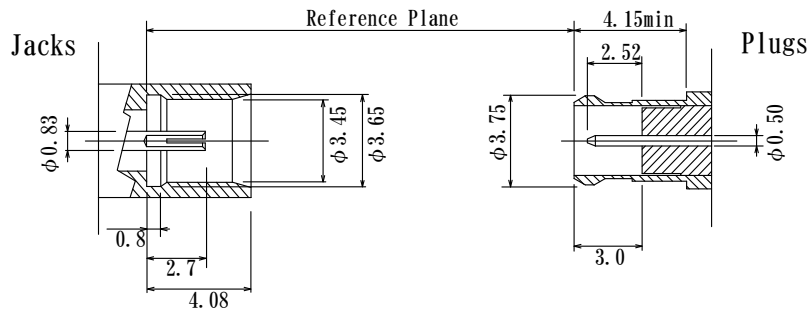
Specifications	CECC22220	
Nominal impedance	50Ω / 75Ω	
VSWR	DC~6GHz 1.4 max / DC~1GHz 1.3 max	
Insulation resistance	1000MΩ min at DC500V	
Dielectric withstanding voltage	AC500V 1 minute	
Temperature range	-55°C~+85°C	
Mating Holding Force	25.5N (2.6kg) max	
Contact durability	less than 10mΩ after 500 matings	
Material	Shell	Brass Gold plated / Nickel plated
	Spring Shell	Beryllium copper/Phosphor bronze Gold plated / Nickel plated
	Center Socket Contact	Beryllium copper Heat treated, Gold plated

Specifications may be subject to change without notice.

Interface Dimensions 50Ω



Interface Dimensions 75Ω



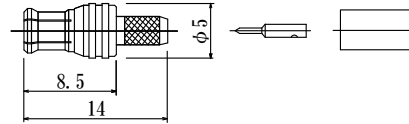
MCX 50Ω Connectors

MCX 50Ω Plugs

MCXP-RG174G
MCXP-RG178G
MCXP-15D



Part No.	Applicable Cable
MCXP-RG174G	RG174/U, RG316/U
MCXP-RG178G	RG178B/U, RG196A/U
MCXP-15D	1.5D2V

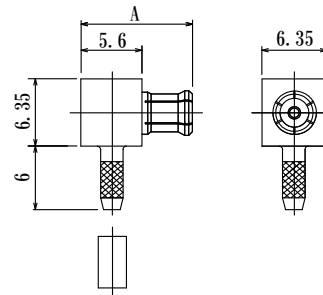


●Au

MCXP-L-RG174G
MCXP-L-RG178G



Part No.	Applicable Cable	A
MCXP-L-RG174G	RG174/U, RG316/U	9.8
MCXP-L-RG178G	RG178B/U, RG196A/U	9.4



●Au