

Socket Terminal SGSS Series

1.27mm pitch

How to use

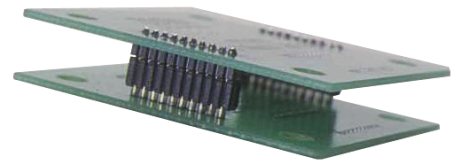
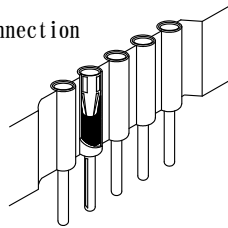
- Four fingers, high reliable contact
- Useful for PC board sandwich style connection

Specifications

Contact resistance : 15mΩ max
Rating current : 1.3A
Temperature range : -55°C~+150°C
(in case of gold plating)

Material

Sleeve : Gold plating over Ni
Contact : Beryllium copper, Gold plating over Ni
Insulator : LCP, PPS, or, PBT glass filled
Black UL94V-0



SGSS-SXX-NZ0010-GG

Socket pin P/N
Total number of socket (40 positions max)
S:Single in line

SGSS-SXX-NZ0010-GG-T018

Socket pin P/N
Total number of socket (40 positions max)
S:Single in line

Acceptable Plug dia. : φ0.50~φ0.35
Pitch : 1.27
PC board hole dia : φ0.80~φ0.60

Each socket pin has own H and L dimension.

Socket Pin	H	L	d
NZ0010-GG	3.8	4.2	3.4
NZ0011-GG	5.5		5.1
NZT10-GG	4.0	3.5	3.5

SGSSR-SXX-NZ0010-GG

Total number of socket (40 positions max)
※old P/N SGSSR-SXX-GG

Acceptable Plug dia. : φ0.50~φ0.35
Pitch : 1.27
PC board hole dia. : φ0.80~φ0.60

Mating configuration/Board space (example)

