

Laser Diode Socket

Round Socket pin type



Specifications

Dielectric Strength: AC500Vrms 1min
Insulation Resistance: 500MΩmin
Contact Resistance: 15mΩ max
Current rating : 1.0A
Operating Temperature: -45°C~+150°C

Material

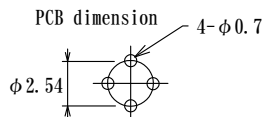
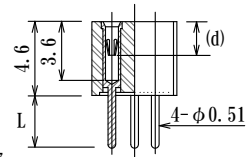
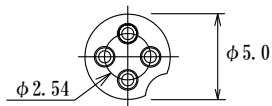
Sleeve : Brass, Gold plating over Ni
Contact : Beryllium, Gold plating over Ni
Insulator: PPS or LCP Black

Acceptable lead dia. $\phi 0.45/0.0177''$ typical

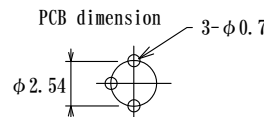
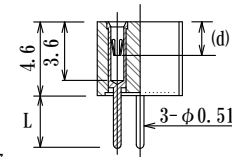
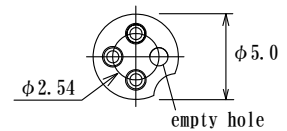
2.54mm pitch circle

P/N	L	d	Remarks	P/N	L	d	Remarks
LD254-4P-30	3.0	2.0	N0010-GG	LD254-3P-30	3.0	2.0	N0010-GG
LD254-4P-24	2.4		N0012-GG	LD254-3P-24	2.4		N0012-GG
LD254-4P-30-NV8	3.0	1.9	NNV80010-GG / Low force type	LD254-3P-30-NV8	3.0	1.9	NNV80010-GG / Low force type
LD254-4P-24-NV8	2.4		NNV80012-GG / Low force type	LD254-3P-24-NV8	2.4		NNV80012-GG / Low force type

4Pin

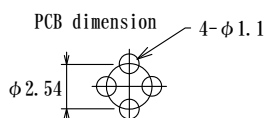
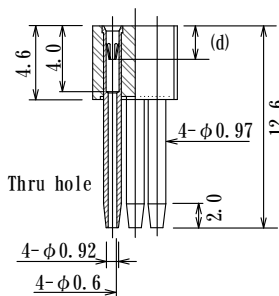
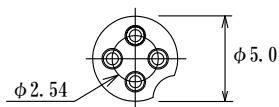


3Pin

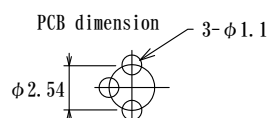
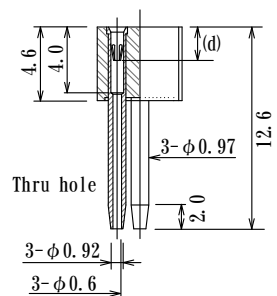
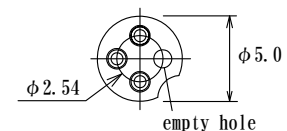


P/N	d	Remarks	P/N	d	Remarks
LD254-4P-NSP126-GG	2.0	NSP126-GG	LD254-3P-NSP126-GG	2.0	NSP126-GG
LD254-4P-NVF8126-GG	1.9	NSPNV8126-GG/ Low force type	LD254-3P-NVF8126-GG	1.9	NSPNV8126-GG/ Low force type

4Pin



3Pin



Laser Diode Socket

Acceptable lead dia. $\phi 0.45/0.0177''$ typical

2.54mm pitch circle

P/N	Remarks	P/N	Remarks
LD254P-4P-F8	N88R150L185-GG / Low force type	LD254P-3P-F8	N88R150L185-GG / Low force type
<p>4pin</p> <p>PC Board dimension (typical)</p> <p>$\phi 2.54$</p> <p>$4-\phi 0.7$</p> <p>$4-\phi 0.6$</p> <p>$4-\phi 0.5$</p> <p>$\phi 6.0$</p> <p>9.5</p> <p>20.5</p> <p>(11.0)</p> <p>(16.0) depth</p> <p>$\phi 8$</p> <p>$\phi 2.54$ P.C.D.</p>		<p>3pin</p> <p>PC Board dimension (typical)</p> <p>$\phi 2.54$</p> <p>$3-\phi 0.7$</p> <p>$3-\phi 0.6$</p> <p>$3-\phi 0.5$</p> <p>$\phi 6.0$</p> <p>9.5</p> <p>20.5</p> <p>(11.0)</p> <p>(16.0) depth</p> <p>$\phi 8$</p> <p>$\phi 2.54$ P.C.D.</p>	
P/N	Remarks	P/N	Remarks
LD254P-4P-F7/M26	N88R150L185-GG / Low force type	LD254P-3P-F7/M26	N88R150L185-GG / Low force type
<p>4pin</p> <p>Flange type</p> <p>23.0</p> <p>15.0</p> <p>$\phi 7.0$</p> <p>8.0</p> <p>$\phi 2.54$ P.C.D.</p> <p>$4-\phi 0.6$</p> <p>20.5</p> <p>4.0</p> <p>3.0</p> <p>2-$\phi 2.8$</p> <p>(11.5)</p> <p>4-$\phi 0.5$</p> <p>$\phi 7.0$</p> <p>3.5</p> <p>(16) depth</p> <p>(4.1)</p> <p>PC Board dimension (typical)</p> <p>$\phi 2.54$</p> <p>$4-\phi 0.7$</p> <p>Mounting Dimension</p> <p>15.0</p> <p>$\phi 7.5$</p> <p>2-M2.6</p>		<p>3pin</p> <p>Flange type</p> <p>23.0</p> <p>15.0</p> <p>$\phi 7.0$</p> <p>8.0</p> <p>$\phi 2.54$ P.C.D.</p> <p>$3-\phi 0.6$</p> <p>20.5</p> <p>4.0</p> <p>3.0</p> <p>2-$\phi 2.8$</p> <p>(11.5)</p> <p>3-$\phi 0.5$</p> <p>$\phi 7.0$</p> <p>3.5</p> <p>(16) depth</p> <p>(4.1)</p> <p>PC Board dimension (typical)</p> <p>$\phi 2.54$</p> <p>$3-\phi 0.7$</p> <p>Mounting Dimension</p> <p>15.0</p> <p>$\phi 7.5$</p> <p>2-M2.6</p>	

Laser Diode Socket

Round Socket pin type

Specifications

Dielectric Strength: AC500Vrms 1min
Insulation Resistance: 500MΩmin
Contact Resistance: 15mΩ max
Current rating : 1.0A
Operating Temperature: -45°C~+150°C

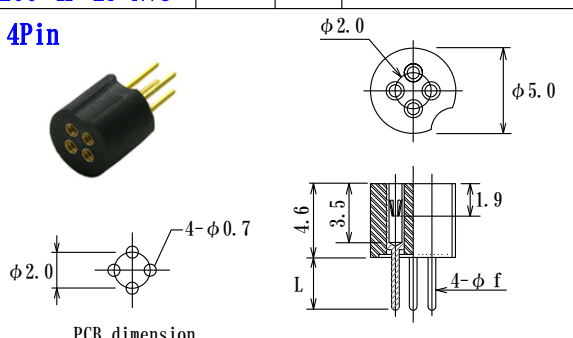
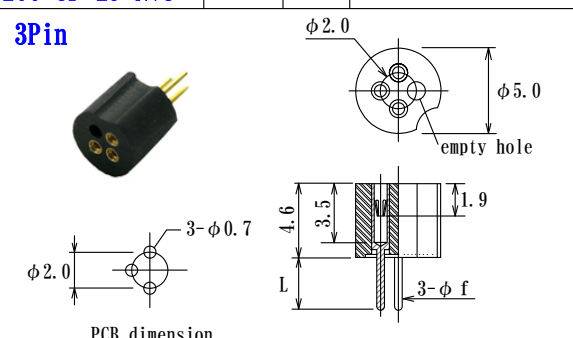
Material

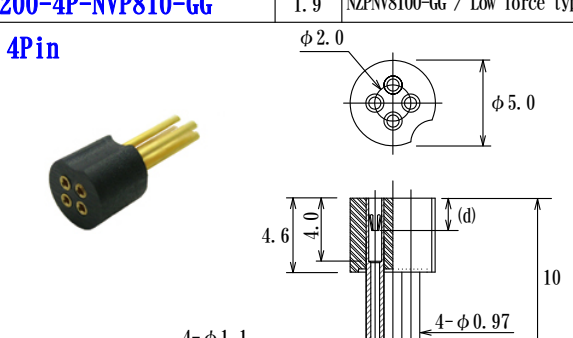
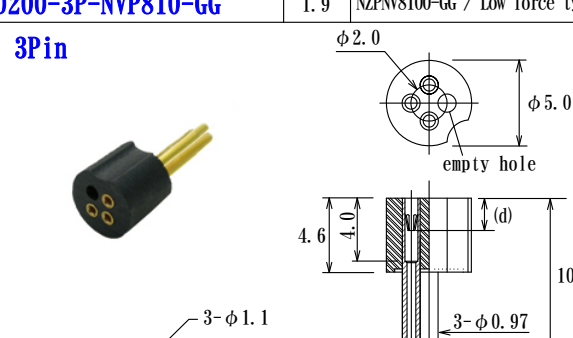
Sleeve : Brass, Gold plating over Ni
Contact : Beryllium, Gold plating over Ni
Insulator: PPS or LCP Black

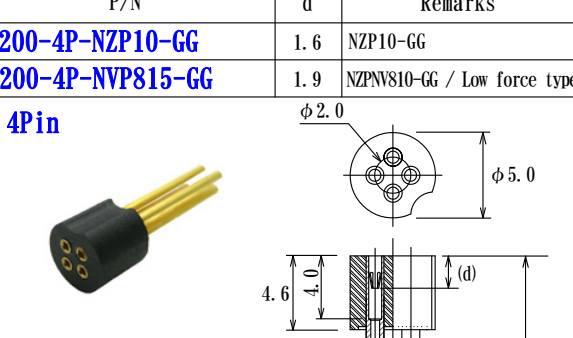
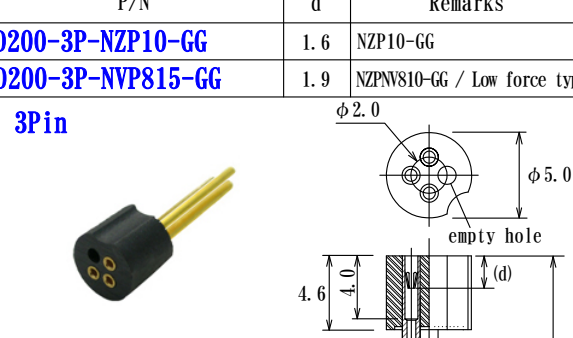
Acceptable lead dia. $\phi 0.45/0.0177''$ typical

2.0mm pitch circle

P/N	L	f	Remarks	P/N	L	f	Remarks
LD200-4P-34	3.4	0.51	NZ0010-GG	LD200-3P-34	3.4	0.51	NZ0010-GG
LD200-4P-29	2.9	0.46	NZT10-GG	LD200-3P-29	2.9	0.46	NZT10-GG
LD200-4P-34-NV8	3.4	0.51	NZNV80010-GG / Low force type	LD200-3P-34-NV8	3.4	0.51	NZNV80010-GG / Low force type
LD200-4P-29-NV8	2.9	0.46	NZTNV810-GG / Low force type	LD200-3P-29-NV8	2.9	0.46	NZTNV810-GG / Low force type

4Pin 		3Pin 			
P/N	d	Remarks	P/N	d	Remarks
LD200-4P-NZP100-GG	1.6	NZP100-GG	LD200-3P-NZP100-GG	1.6	NZP100-GG
LD200-4P-NVP810-GG	1.9	NZPNV8100-GG / Low force type	LD200-3P-NVP810-GG	1.9	NZPNV8100-GG / Low force type

4Pin 		3Pin 			
P/N	d	Remarks	P/N	d	Remarks
LD200-4P-NZP10-GG	1.6	NZP10-GG	LD200-3P-NZP10-GG	1.6	NZP10-GG
LD200-4P-NVP815-GG	1.9	NZPNV810-GG / Low force type	LD200-3P-NVP815-GG	1.9	NZPNV810-GG / Low force type

4Pin 		3Pin 	
--	--	---	--