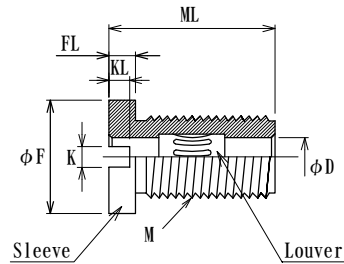


## UJMSF series, Full thread Socket Pins with Flange

- Can be attached to Bus bar, Insulated panel.
- Can be attached to a threaded Conductor.
- Your specific custom designs welcome. Consult us for details.



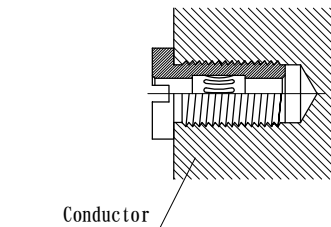
Washers, Spring washers, and Nuts are not included.  
Please contact us as it is possible to prepmare it.

Operating Temperature : -55°C ~ +125°C

P/N	Plug Dia.	Plating Louver/ Sleeve	φD	M	φF	FL	ML	KL	K	Current Rating [A] at 25°C	Remarks	
<a href="#">UJMSF20AS-HS</a>	2.0	Au/Ag	2.2	M8x0.75P	<i>Fine thread</i>	11.0	2.5	16.0	1.5	1.5	25	(LV082/12-T012-BE25-G25)
<a href="#">UJMSF25AS-HS</a>	2.5	Au/Ag	2.7	M8x0.75P		11.0	2.5	16.5	1.5	1.5	30	(LV082/14-T012-BE25-G25)
<a href="#">UJMSF30AS-HS</a>	3.0	Au/Ag	3.2	M8x0.75P		11.0	2.5	16.5	1.5	1.5	35	(LV082/16-T012-BE25-G25)
<a href="#">UJMSF40AS-HS</a>	4.0	Au/Ag	4.2	M10x1.0P		13.0	3.0	19.5	2.0	1.5	50	(LV082/20-T012-BE25-G25)
<a href="#">UJMSF50AS-HS</a>	5.0	Au/Ag	5.2	M10x1.0P		13.0	3.0	19.0	2.0	1.5	70	(LV115/17-T018-BE25-G25)
<a href="#">UJMSF60AS-HS</a>	6.0	Au/Ag	6.2	M12x1.0P		16.0	3.5	19.0	2.5	2	90	(LV115/20-T018-BE25-G25)
<a href="#">UJMSF80AS-HS</a>	8.0	Au/Ag	8.2	M14x1.0P		18.0	3.5	33.0	2.5	2.5	125	(LV115/26-T018-BE25-G25)
<a href="#">UJMSF100AS-HS</a>	10.0	Ag	10.2	M18x1.0P		22.0	5.5	33.0	3.5	3.5	180	(LV2PC)
<a href="#">UJMSF120AS-HS</a>	12.0	Ag	12.2	M20x1.0P		24.0	5.5	33.0	3.5	3.5	230	
<a href="#">UJMSF140AS-HS</a>	14.0	Ag	14.2	M22x1.0P		26.0	6.0	36.0	4.0	4.0	280	
<a href="#">UJMSF160AS-HS</a>	16.0	Ag	16.2	M24x1.0P		28.0	6.0	36.0	4.0	4.0	340	
<a href="#">UJMSF180AS-HS</a>	18.0	Ag	18.2	M28x1.0P		32.0	6.0	40.0	4.0	4.0	400	
<a href="#">UJMSF200AS-HS</a>	20.0	Ag	20.2	M30x1.0P		36.0	6.0	40.0	4.0	5.0	460	
<a href="#">UJMSF250AS-HS</a>	25.0	Ag	25.2	M42x1.5P		48.0	7.0	60.0	5.0	5.0	620	
<a href="#">UJMSF300AS-HS</a>	30.0	Ag	30.2	M48x1.5P		54.0	7.0	60.0	5.0	5.0	800	
<a href="#">UJMSF350AS-HS</a>	35.0	Ag	35.2	M50x1.5P		56.0	7.0	60.0	5.0	5.0	1000	
<a href="#">UJMSF400AS-HS</a>	40.0	Ag	40.2	M55x1.5P		61.0	8.0	60.0	6.0	6.0	1200	

○How to use (Example)

1) Attaching to threaded Conductor



2) Attaching to Bus bar or Insulated panel

