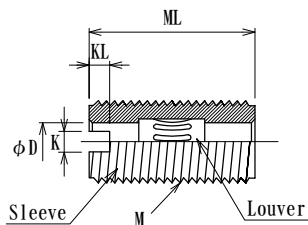


UJMSW series, Full thread Socket Pins

- Can be attached to Bus bar, Insulated panel.
- Can be attached to a threaded Conductor.
- Your specific custom designs welcome. Consult us for details.



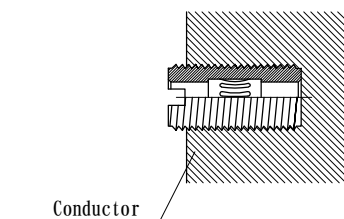
Washers, Spring washers, and Nuts are not included.
Please contact us as it is possible to prepare it.

Operating Temperature : -55°C ~ +125°C

P/N	Plug Dia.	Plating Louver/ Sleeve	φD	M	ML	KL	K	Current Rating [A] at 25°C	Remarks
UJMSW20AS-HS	2.0	Au/Ag	2.2	M8x0.75P	<i>Fine thread</i>	16.0	1.5	1.5	25 (LV082/12-T012-BE25-G25)
UJMSW25AS-HS	2.5	Au/Ag	2.7	M8x0.75P		16.5	1.5	1.5	30 (LV082/14-T012-BE25-G25)
UJMSW30AS-HS	3.0	Au/Ag	3.2	M8x0.75P		16.5	1.5	1.5	35 (LV082/16-T012-BE25-G25)
UJMSW40AG	4.0	Au	4.3	M10x1.0P		20.0	2.5	2.5	45 (LV8/21-T015)
UJMSW40AS-HS	4.0	Au/Ag	4.2	M10x1.0P		19.5	2.0	1.5	50 (LV082/20-T012-BE25-G25)
UJMSW50AG	5.0	Au	5.2	M10x1.0P		24.0	2.5	2.5	60 (LV115/17-T020)
UJMSW50AS-HS	5.0	Au/Ag	5.2	M10x1.0P		19.0	2.0	1.5	70 (LV115/17-T018-BE25-G25)
UJMSW60AS-HS	6.0	Au/Ag	6.2	M12x1.0P		19.0	2.5	2	90 (LV115/20-T018-BE25-G25)
UJMSW80AG	8.0	Au	8.2	M14x1.5P		24.0	2.5	2.5	120 (LV115/26-T020)
UJMSW80AS-HS	8.0	Au/Ag	8.2	M14x1.0P		33.0	2.5	2.5	125 (LV115/26-T018-BE25-G25)
UJMSW100AS-HS	10.0	Ag	10.2	M18x1.0P		33.0	3.5	3.5	180
UJMSW120AS-HS	12.0	Ag	12.2	M20x1.0P		33.0	3.5	3.5	230
UJMSW140AS-HS	14.0	Ag	14.2	M22x1.0P		36.0	4.0	4.0	280
UJMSW160AS-HS	16.0	Ag	16.2	M24x1.0P		36.0	4.0	4.0	340
UJMSW180AS-HS	18.0	Ag	18.2	M28x1.0P		40.0	4.0	4.0	400
UJMSW200AS-HS	20.0	Ag	20.2	M30x1.0P		40.0	4.0	5.0	460
UJMSW250AS-HS	25.0	Ag	25.2	M42x1.5P		60.0	5.0	5.0	620
UJMSW300AS-HS	30.0	Ag	30.2	M48x1.5P		60.0	5.0	5.0	800
UJMSW350AS-HS	35.0	Ag	35.2	M50x1.5P		60.0	5.0	5.0	1000
UJMSW400AS-HS	40.0	Ag	40.2	M55x1.5P		60.0	6.0	6.0	1200

○How to use (Example)

1) Attaching to threaded Conductor (With stop)



2) Attaching to Bus bar or Insulated panel

