

## Open Type BGA/CSP/LGASocket Full custom GU series

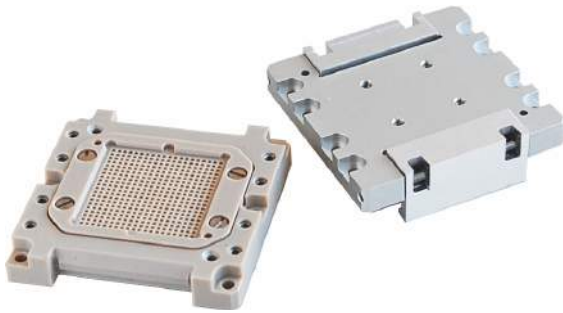
·Custom design welcome.

A design requires the following information.

- IC Package's dimension tolerance
- IC Package's seating height and other restrictions
- PCB space's restriction
- Shape through the sensor
- durability
- Temperature (burn-in test), Humidity
- Signal Frequency
- etc.

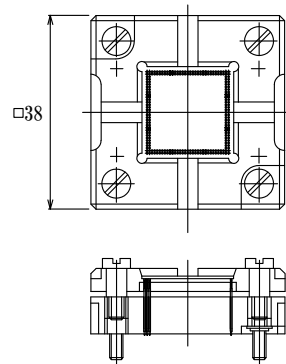
Example of material

- Glass epoxy
- PET
- PEI
- PEEK
- PAI
- MDS
- SUMIKA SUPER (LCP)
- Aluminum
- Duralumin
- Ceramics
- Silver PEEK
- Rigid PEEK



Reference example

0.5 mm of 248 pole pitch Probe socket



How to use the frame of GU series

A lid-less type (A user prepares IC control)

Mating Configuration

