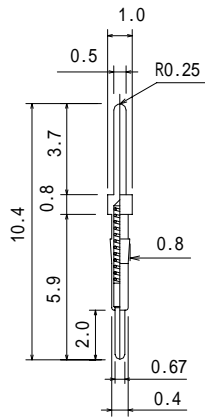


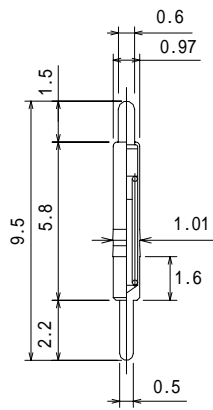
Single ended probepin 片端プローブピン
 Outer Dia. 1.0mm~1.29mm/ 0.039" ~ 0.051"

日本コネクト
 TEL 03(5706)4360
 FAX 03(5706)4363



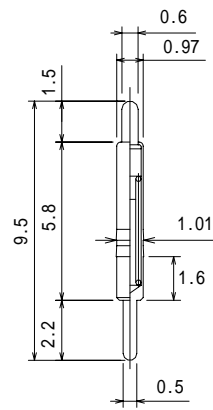
Full travel 1.2mm
 0.34N(35gf) at 0.5mm travel

KB2-067Q/Q-01



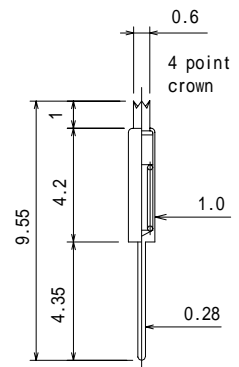
Preload 0.13N(13.6gf)
 0.58N(59gf) at 1.0mm travel

8YN1058G



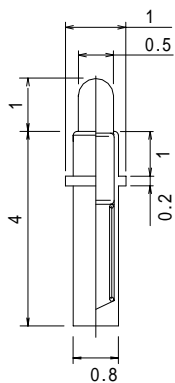
Preload 0.075N(7.5gf)
 0.3N(31gf) at 1.0mm travel

8YN1058G-30



Preload 0.10N(10gf)
 0.29N(30gf) at 0.4mm travel

8YF100L955



Full travel 1.0mm
 Preload 0.035N(3.6gf)
 0.127N(13gf) at 0.5mm travel

8YF100L50-KS