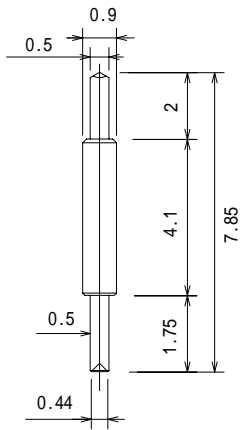


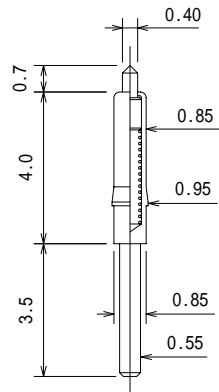
Single ended probepin 片端プローブピン
Outer Dia. 0.85~0.99mm/ 0.033" ~ 0.039"

日本コネクト
TEL 03(5706)4360
FAX 03(5706)4363



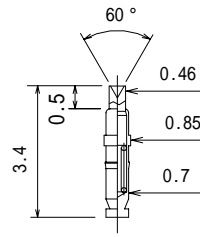
Full travel 1.4mm

8YN90D20S



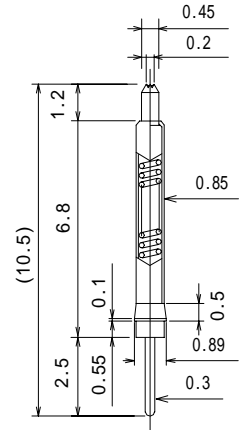
Full travel 0.7mm
0.29N(30gf) at 0.4mm travel

8YN-D85L82-VG



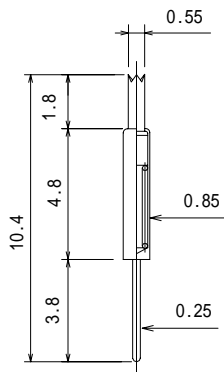
Preload 0.12N(12gf)
0.2N(20gf) at 0.4mm travel

8YF85L34-CP



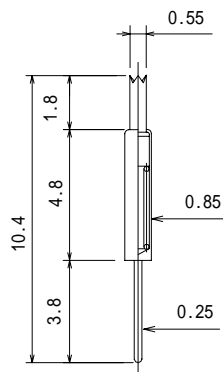
Full travel 1.2mm
0.29N(30gf) at 0.6mm travel

8YF90L91-F045-PKAI



Preload 0.10N(10gf)
0.29N(30gf) at 0.7mm travel

8YF85L104-G

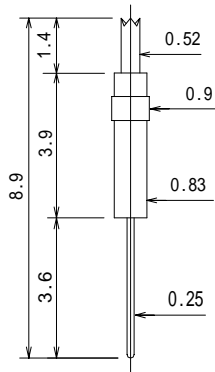


Preload 0.08N(8gf)
0.20N(20gf) at 0.7mm travel

8YF85L104-G-2

Single ended probepin 片端プローブピン
 Outer Dia. 0.85~0.99mm/ 0.033" ~ 0.039"

日本コネク
 TEL 03(5706)4360
 FAX 03(5706)4363



Full travel 1.4mm
 Preload 0.04N(4gf)
 0.19N(19gf) at 1.0mm travel

8YF83L89-G