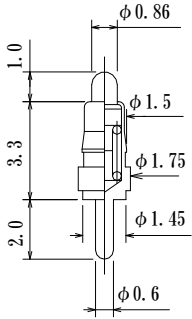
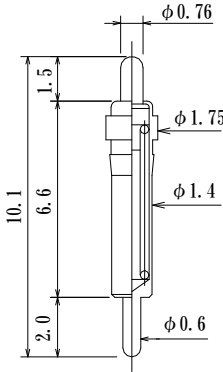
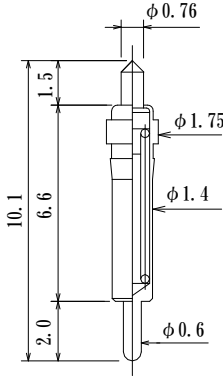
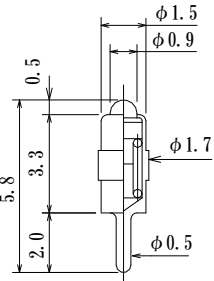
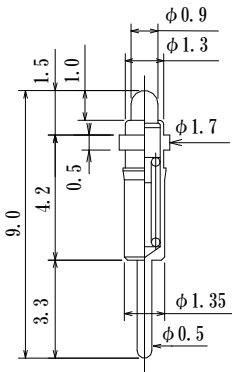
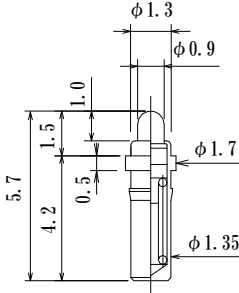
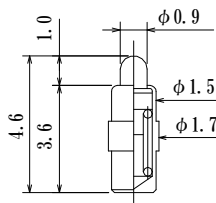
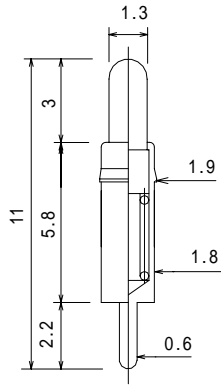


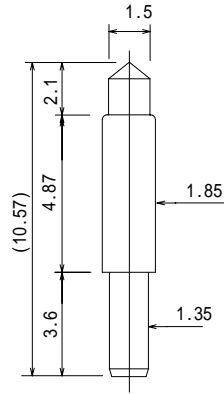
Single ended probepin 片端  
 Outer Dia.  $\phi 1.7 \sim \phi 1.99\text{mm} / \phi 0.067" \sim \phi 0.078"$

 <p>0.66N (67gf) at 0.6mm travel</p> <p><b>8YJ1533G</b></p>	<p>Spherical</p>  <p>Preload 0.147N (15gf)        0.77N (78gf) at 1mm travel</p> <p><b>8YJ1566ZG</b></p>	<p>Conical</p>  <p>Preload 0.147N (15gf)        0.77N (78gf) at 1mm travel</p> <p><b>8YJ1566ZG-A</b></p>	 <p>Preload 0.37N (38gf)        Current max 0.5A        0.88N (90gf) at half travel</p> <p><b>8YJ-R1101-07</b></p>
 <p>Preload 0.16N (16gf)        Current max 0.2A        0.54N (55gf) at half travel</p> <p><b>8YJ-M1204-01</b></p>	 <p>Preload 0.16N (16gf)        Current max 0.2A        0.54N (55gf) at half travel</p> <p><b>8YJ-M0201-00</b></p>	 <p>Preload 0.37N (38gf)        Current max 0.5A        1.31N (134gf) at half travel</p> <p><b>8YJ-R0101-00</b></p>	

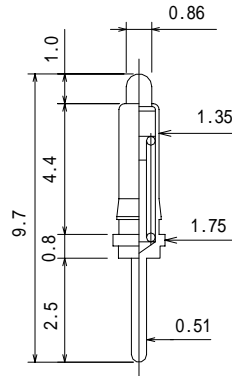
Single ended probepin 片端プローブピン  
 Outer Dia. 1.7 ~ 1.99mm/ 0.067" ~ 0.078"



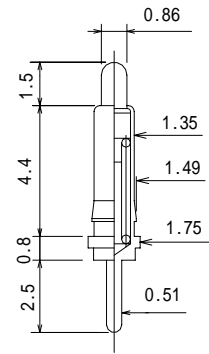
Preload 0.16N(16gf)  
 Full travel 3.0mm  
 Current max 0.2A  
 0.39N(40gf) at 1mm travel  
**8YJ1858G**



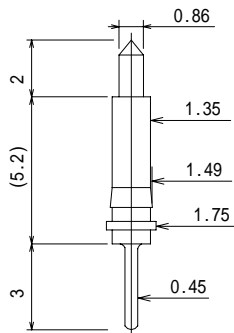
Full travel 2.1mm  
 0.59N(60gf) at 1.5mm travel  
**8YF15L106-AC**



0.47N(45gf) at 0.6mm travel  
**8YJ1552G-HT**



Full travel 1.5mm  
 Preload 0.08N(8gf)  
 0.41N(40gf) at 1.0mm travel  
**8YJ1552G-1.5HT**



Full travel 2.0mm  
 Preload 0.086N(8.7gf)  
 0.392N(40gf) at 1.0mm travel  
**8YJ1552G-2HT-CON**