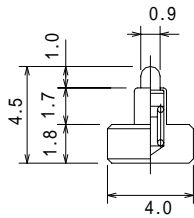
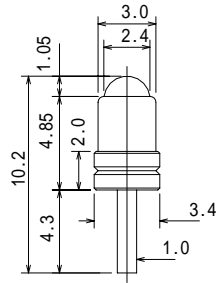


Single ended type 片端ローブピン
 Outer Dia. 2.0mm/0.079" or larger



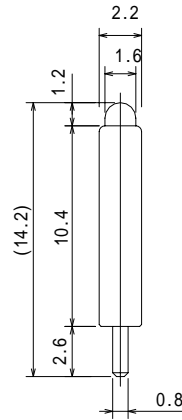
Preload 0.37N(38gf)
 Current max 0.5A
 1.31N(134gf) at half travel

8YJ-E0101-01



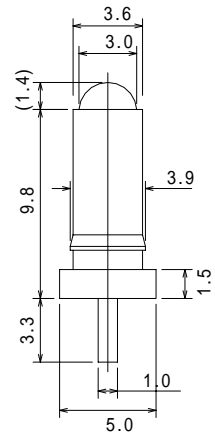
Preload 0.78N(80gf)
 1.25N(128gf) at
 0.8mm travel

8YNM34485G



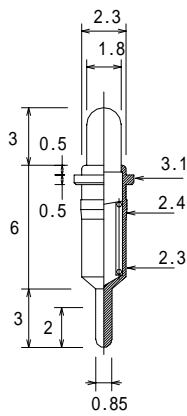
0.98N(100gf) at
 1.0mm travel

8YJ20104



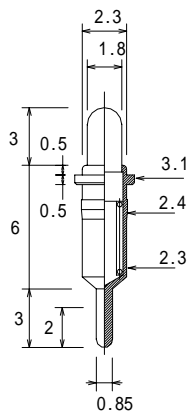
1.96N(200gf) at
 1.0mm travel

8YNM5098-G



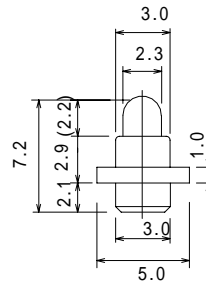
Full travel 2.5mm
 Current max 0.5A
 0.25N(25gf) at 1.5mm travel

8YJ2360G-BA



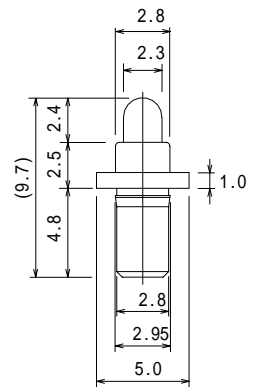
Full travel 2.5mm
 Current max 0.5A
 0.25N(25gf) at 1.5mm travel

8YJ2360G-C



Current max 0.3A
 1.76N(180gf) at 1.0mm travel

8YJC2350G



Full travel 2.4mm
 1.76N(180gf) at 1.1mm travel

8YJ2873G-BA

Single ended type 片端プロブピン
 Outer Dia. 2.0mm/0.079" or larger

SMT type

Current max 0.5A
 1.13N(115gf) at 1.0mm travel

8YJ1057G-MO

Full travel 1.0mm
 Current max 0.5A
 1.47N(150gf) at 1.0mm travel

8YJ2036G

Current 1.3A(max 3A)
 1.96N(200gf) at 1.0mm travel

8YJ1090G-HI-BA

High Current 6A

Full travel 5.0mm
 2.94N(300gf) at 5.0mm travel
 Current max 6A

8YF40L206-300G

Current max 2A
 1.96N(200gf) at 1.0mm travel

8YF400L161-HI

Biascut
 0.96N(100gf) at 2.0mm travel
 Full travel 5.0mm

8YF400L220-HI

Full travel 1.6mm
 0.69N(70gf) at 1.0mm travel
 A=7
 A=5.5

8YJ-BSM15-G-7
8YJ-BSM15-G-5.5

Full travel 5.0mm
 2.94N(300gf) at 5.0mm travel
 Current max 6A

8YF40L206-300G