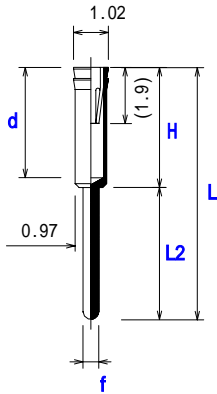
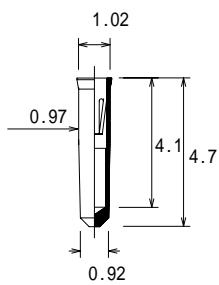


# 0.52 ~ 0.30mm plug, Socket Pins

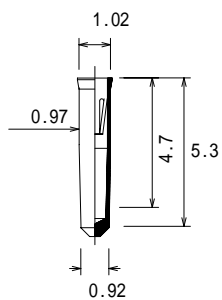
Contact Resistance: less than 15m at 0.45mm dia.plug  
 Acceptable Plug Range: 0.52 ~ 0.30mm  
 Material Sleeve: Brass Gold over Ni plated  
 Contact: Beryllium-Copper Gold over Ni plated  
 (N-01contact)



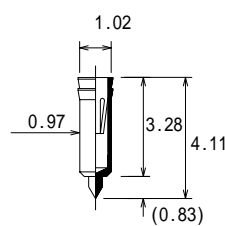
Parts Number	Height H	Length L2	Depth d	Length L	f
<b>NZT51MO-GG</b>	3.1	1.9	2.7	5.0	0.46
<b>NZT21-GG</b>	3.45	1.85	3.05	5.3	
<b>NZT20-GG</b>		1.15		4.6	
<b>NZT25-GG</b>		3.5		6.95	
<b>NZT10-GG</b>				7.5	
<b>NZ0019-GG</b>	7.2	3.4	6.9	10.6	0.51
<b>NZ0018-GG</b>	5.6	5.0	5.3		
<b>NZ0016-GG</b>	4.5	4.2	4.0		
<b>NZ0014-GG</b>	3.8	6.8	3.4		
<b>NZ0012-GG</b>	3.0	1.2	2.7	4.2	0.46
<b>NZ0011-GG</b>	5.5	4.2	5.2	9.7	0.51
<b>NZ0010-GG</b>	3.8	4.2	3.5	8.0	
<b>NZ0033-GG</b>	3.8	8.76		12.56	



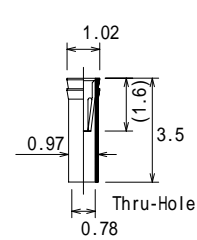
**NZ0022-GG**  
**NZ0022-GT**



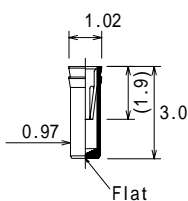
**NZ0025-GG**  
**NZ0025-GT**



**NZT24B-GT**  
 非RoHS品/受注停止中



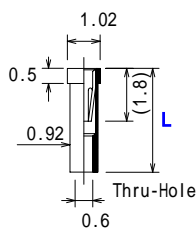
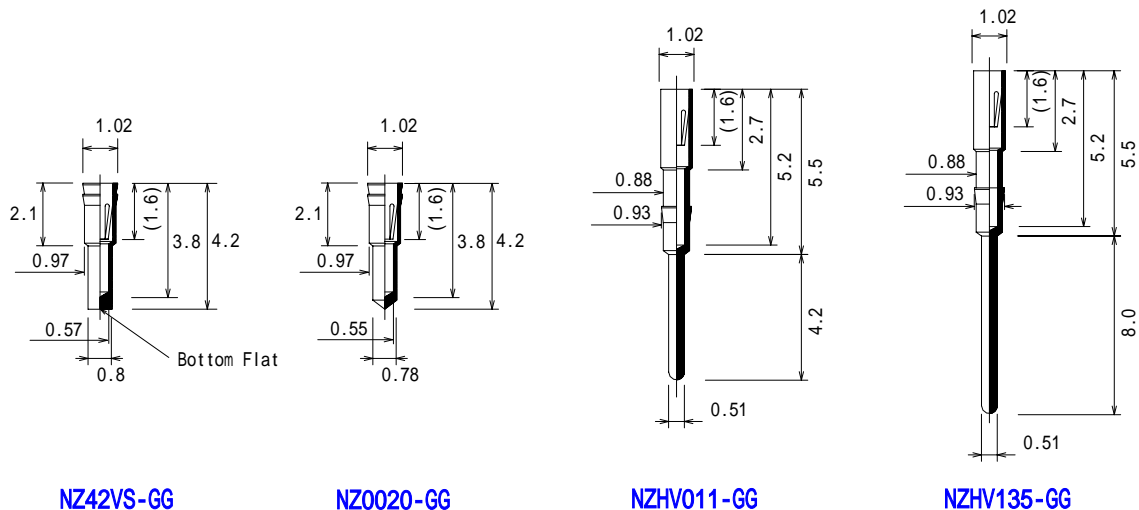
**NZP35-GT**



**NZT35TDD-GG**

# 0.52 ~ 0.30mm plug, Socket Pins

Contact Resistance: less than 15m at 0.45mm dia.plug  
 Acceptable Plug Range: 0.52 ~ 0.30mm  
 Material Sleeve: Brass Gold over Ni plated  
 Contact: Beryllium-Copper Gold over Ni plated  
 (N-01contact)



Patrs Number	L Length
<a href="#">NZP035FJ/92-GG</a>	3.5
<a href="#">NZP045FJ/92-GG</a>	4.5
<a href="#">NZP060FJ/92-GG</a>	6.0

